

INDEX OF SHEETS

Sheet No. 1	Title Sheet
" " 2	Typical Sections of Improvement
" " 3	Standard Type Intersections
" " 4	Superelevation Standard
" " 5-17	Plan and Profile
" " 18-52	Cross Sections
" " 1-A	Fence Moving

SOUTH CAROLINA STATE HIGHWAY DEPARTMENT COLUMBIA

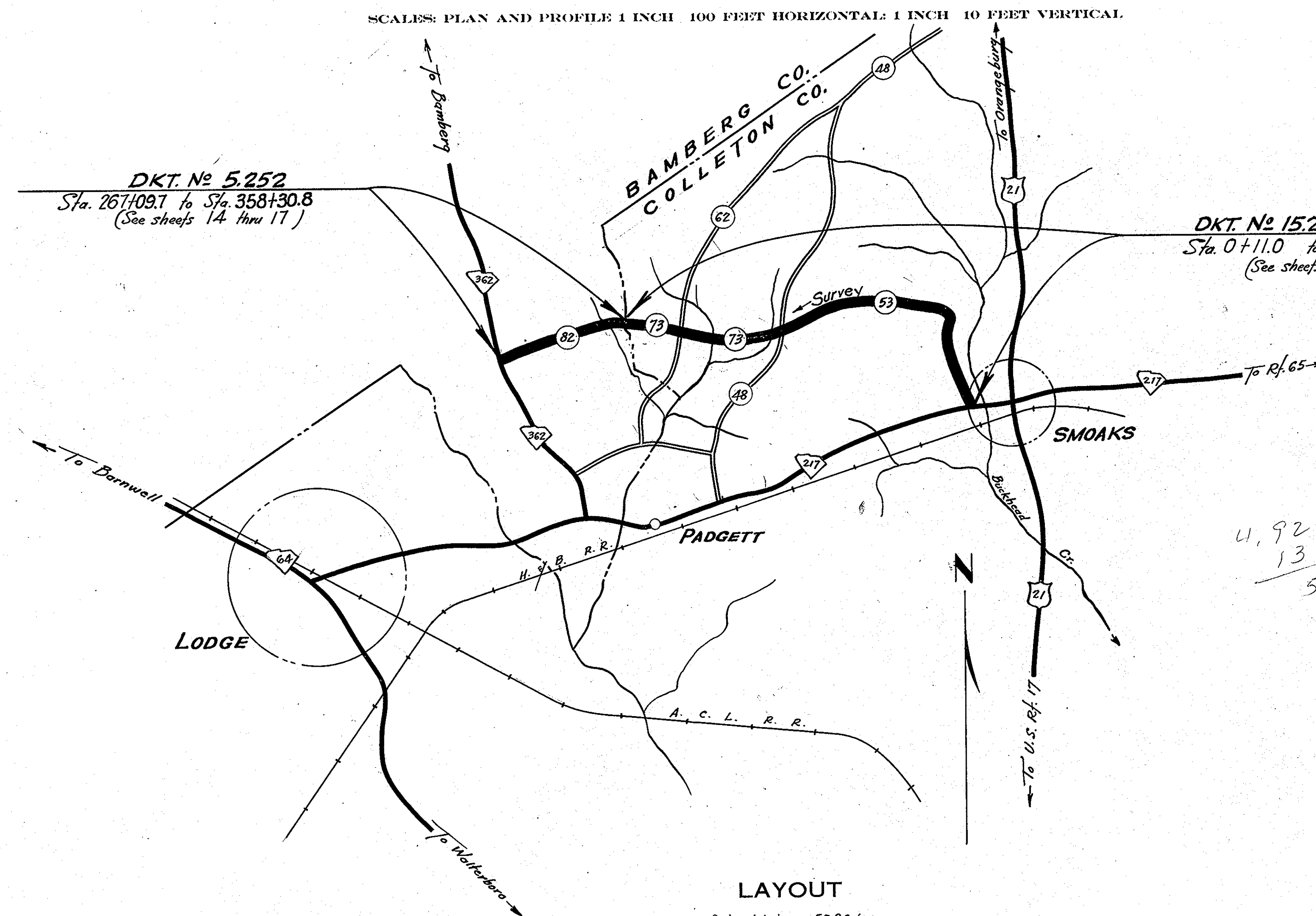
PLAN AND PROFILE OF PROPOSED STATE HIGHWAY

DKT. N° 15.259 Parts 1 & 2 - RDS. 53 & 73, FROM RT. 217 IN SMOAKS TO BAMBERG CO. LINE - COLLETON CO.
DKT. N° 5.252 - RD. 82, FROM COLLETON CO. LINE TO RT. 362 — BAMBERG CO.

FED. ROAD DIV. NO.	STATE	COUNTY	DOCKET NO.	PROJECT NO.	ROUTE NO.	SHEET NO.	TOTAL SHEETS
3	S. C.	Bamberg (Bamberg)	5.252 15.259		79.82	1	52

SUMMARY OF ESTIMATED QUANTITIES

	DKT. 15.259 Part 1	DKT. 15.259 Part 2	DKT. 5.252	
EARTHWORK:				
Clearing and Grubbing within Roadway	Neqy.	Neqy.	Neqy.	Aeres
" " of Borrow & Material Pits	0.5	2.0	1.0	C.Y.
Common Excavation	101	18,403	6870	C.Y. H.M.
Overhaul	583	27,537	9329	
BASE COURSE:				
Earth Type Base Course (Pit Material)	352	11,790	4,211	C.Y.
Scarifying, Mixing, Remixing, Shaping & Reshaping	1,697	56,670	20,256	M.S.Y.
Add'l. " " " "	0.400	14,000	5,000	
SURFACING:				
Bituminous Surfacing (1 in. Pen. with Seal)	1618	53,782	19,242	S.Y.
STRUCTURES:				
15" R.C. Pipe	—	40	160	L.F.
18" " " "	—	706	212	" "
24" " " "	—	88	12	" "
30" " " "	—	—	36	" "
42" " " "	—	108	—	" "
60" " " "	—	36	—	" "
72" " " "	—	36	—	" "
15" Relaid Pipe	—	79	—	" "
24" " " "	—	21	—	" "
Rip Rap	—	10	—	Tons
INCIDENTALS:				
Moving Item No. 1- Pitch Pump 15' Rt. & Sta. 44+50	—	UNIT	—	L.S.
Moving Item No. 2- Barn and stables (30' x 40') Rt. Sta. 44+50	—	UNIT	—	L.S.



4,922
13
56

OK
8/16/49

CONVENTIONAL SIGNS

State Line	Trolley Poles
County Line	Power Poles
City or Town Limits	Telephone or Telegraph Poles
Property Line	Marsh
Fence	Trees
Retaining Wall	Brush
Existing Road	Stumps
℄ and R.O.W. Lines of	Buildings
Proposed Road	Bridge
Railroad	Concrete Box Culvert
Levee or Embankment	Pipe Culvert
Guard Rail	Drop Inlet and Culvert
Point of Intersection (P. I.)	Hub on Center Line

LEGEND

PROPOSED PROJECT
OTHER ROADS

LAYOUT

Scale: 1 inch = 5280 feet

	DKT. 15.259 Part 1	DKT. 15.259 Part 2	DKT. 5.252	
Net Length of Roadway	0.134	4.922	1.727	Miles
Net Length of Bridges	0.000	0.000	0.000	Miles
Net Length of Project	0.134	4.922	1.727	Miles
Length of Exceptions	0.000	0.000	0.000	Miles
Gross Length of Project	0.134	4.922	1.727	Miles

Equalities in Stationing
Sta. 198+12.3 - Sta. 198+11.0

Note: All workmanship and material on this project to conform with South Carolina State Highway Department Standard Specifications for Highway Construction dated March 15th 1939, as approved by the Administrator, Federal Works Agency.

APPROVED FOR THE TOWN OF SMOAKS

DATE

W. H. Anderson Mayor 8-16-49
Jim W. Caldwell 8-16-49
A. F. Phillips, Jr. 8-16-49
James S. Smith, Jr. 8-16-49
J. H. Seward clerk 8-16-49

APPROVED

S. N. Harrison
STATE HIGHWAY ENGINEER 7/7/49

RECOMMENDED FOR APPROVAL

[Signature]
DISTRICT ENGINEER
PUBLIC ROADS ADMINISTRATION
FEDERAL WORKS AGENCY

APPROVED

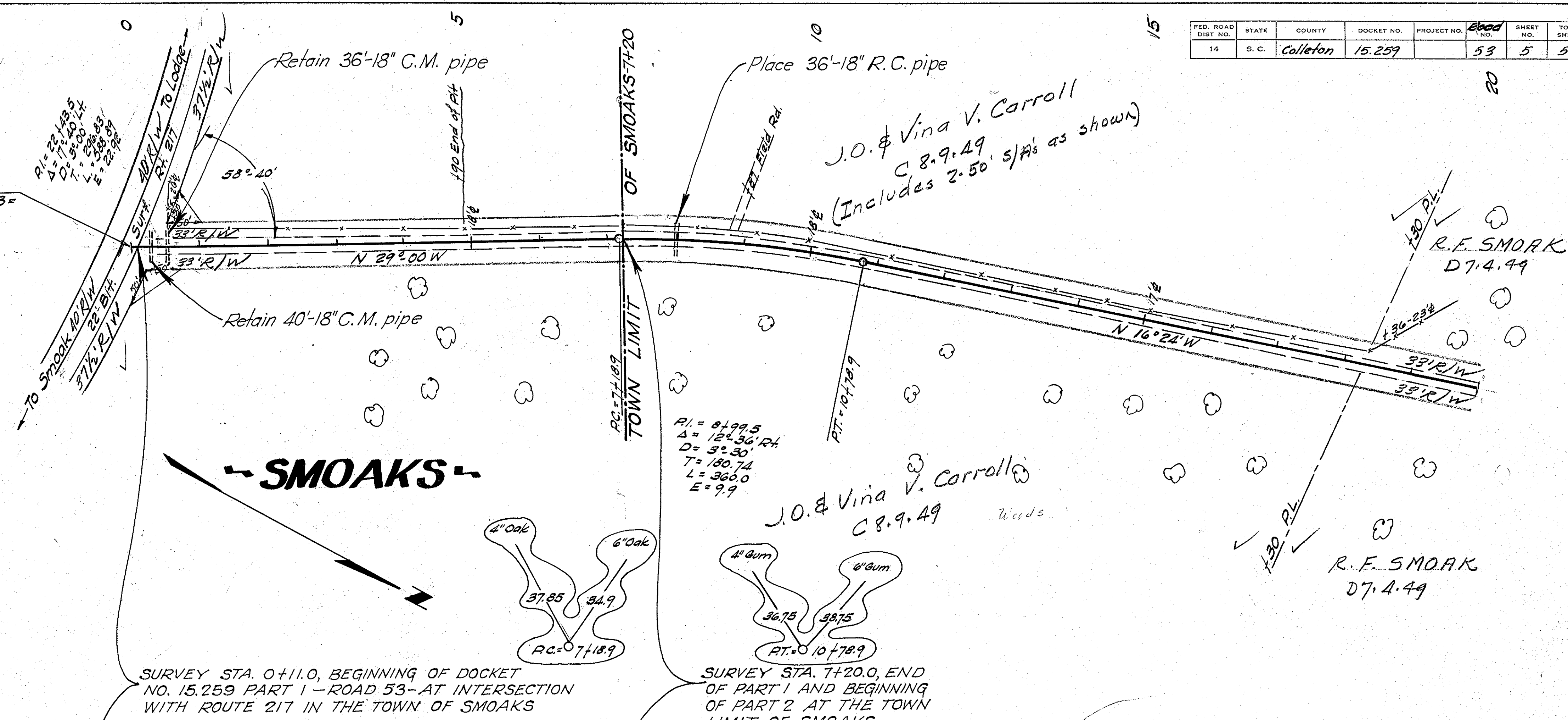
[Signature]
DIVISION ENGINEER
PUBLIC ROADS ADMINISTRATION
FEDERAL WORKS AGENCY

FED. ROAD DIST. NO.	STATE	COUNTY	DOCKET NO.	PROJECT NO.	Sheet No.	SHEET NO.	TOTAL SHEETS
14	S. C.	Colleton	15.259		53	5	52

PLAN	DATE	BY	NO.
SURVEYED			
PLOTTED			
CHECKED			
NOTED			
STRUCTURE NOTATIONS CHECK			

PROFILE	DATE	BY	NO.
SURVEYED			
PLOTTED			
CHECKED			
NOTED			
STRUCTURE NOTATIONS CHECK			

TIE EQUALITY ONLY: -
STA. 0+00 DKT. 15.259 RD. 53 -
STA. 21+62.67 DKT. 15.217



SURVEY STA. 0+11.0, BEGINNING OF DOCKET NO. 15.259 PART 1 - ROAD 53 - AT INTERSECTION WITH ROUTE 217 IN THE TOWN OF SMOAKS

SURVEY STA. 7+20.0, END OF PART 1 AND BEGINNING OF PART 2 AT THE TOWN LIMIT OF SMOAKS.

U.S.G.S. B.M. - SMOAKS, 70 ft. S. of SW. corner of Post Office, in S.E. angle of junction of U.S. Highway 21 and Road E. 45 ft. E. of centerline of highway 34 ft. S. of road, iron post stamped Prim. Trax. Sta. No. 5 Mac 1918 109' (recovered by U.S.G.S. Survey in 1935) Elevation = 108.435

B.M. No. 1 - Nail in power pole 75 ft. E. of Sta. 0+50 Elevation = 99.70

B.M. No. 2 - Nail in base of 18\"/>

EXC.	EMB.	TOTAL
101	231	332
30%	711	
S. TOTAL	332	332
LESS	231	231
TOTAL	101	101

OVERHAUL = 231 C.Y.H.M.
* OBTAIN 231 CY BORROW FROM WASTE IN BAL. STA 7+20 TO STA. 16+46

EXC.	EMB.	TOTAL
540	206	746
50%	103	
* WASTE	231	
TOTAL	540	540

* USE 231 CY WASTE AS BORROW IN BAL. STA 0+11.0 TO STA. 7+20

NOTES:

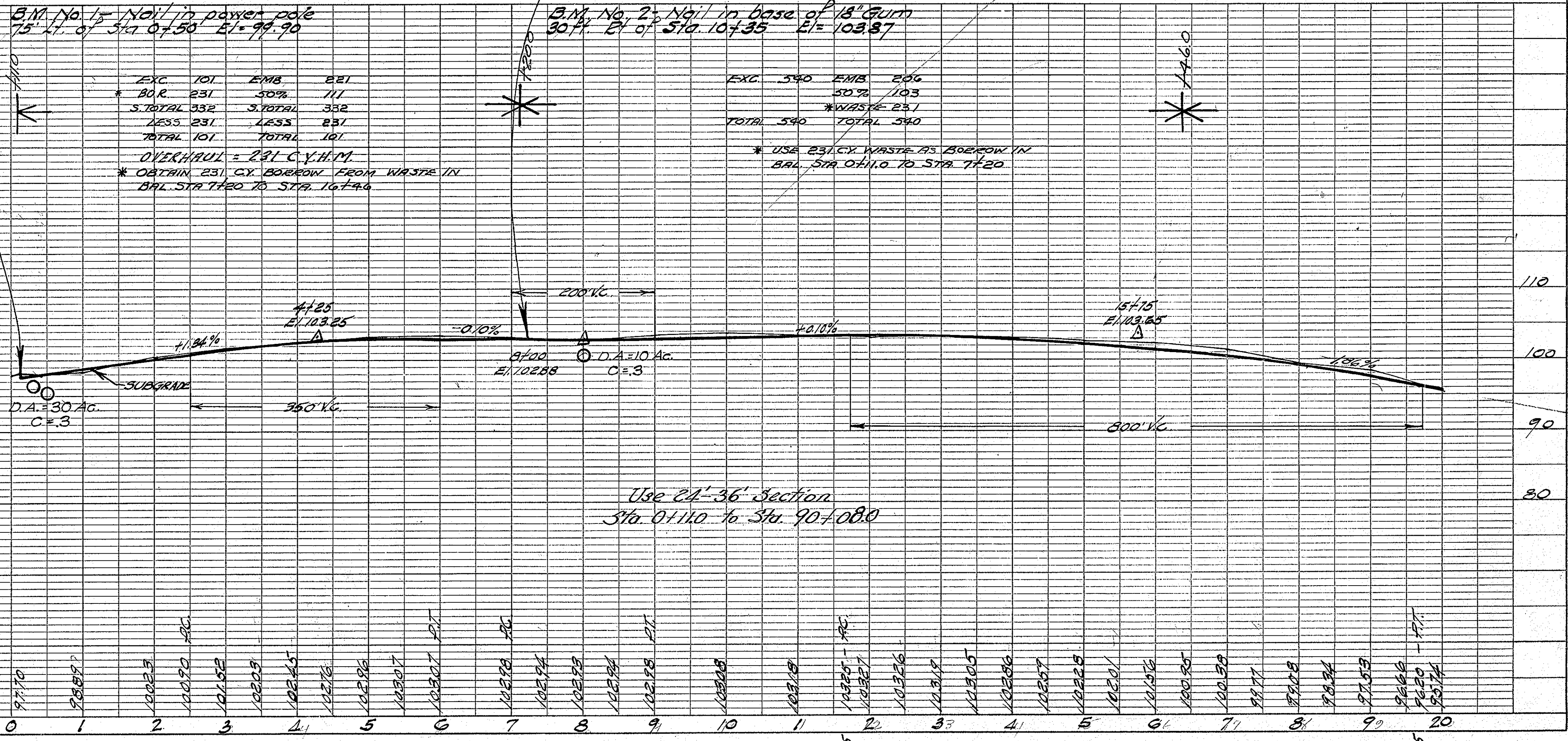
Changes involving increased cost of project or changes in alignment must be specifically authorized by the State Highway Engineer. District Engineer may authorize minor alterations not in conflict with the Standard Practices of the Department and not involving increases in cost. Forward information on any change in alignment to the Columbia Office as soon as the revision is completed.

All curves are to be super-elevated for a design speed of 45 M.P.H. as shown on sheet no. 4. Superelevation to be accomplished by revolving about centerline.

The cost of all drilling and chipping necessary in extending pipe culverts shall be included in the price bid per linear foot for pipe.

The following quantities are not shown in detail on the plans, but are included in the Summary of Estimated Quantities and may be varied during construction as directed by the Engineer:

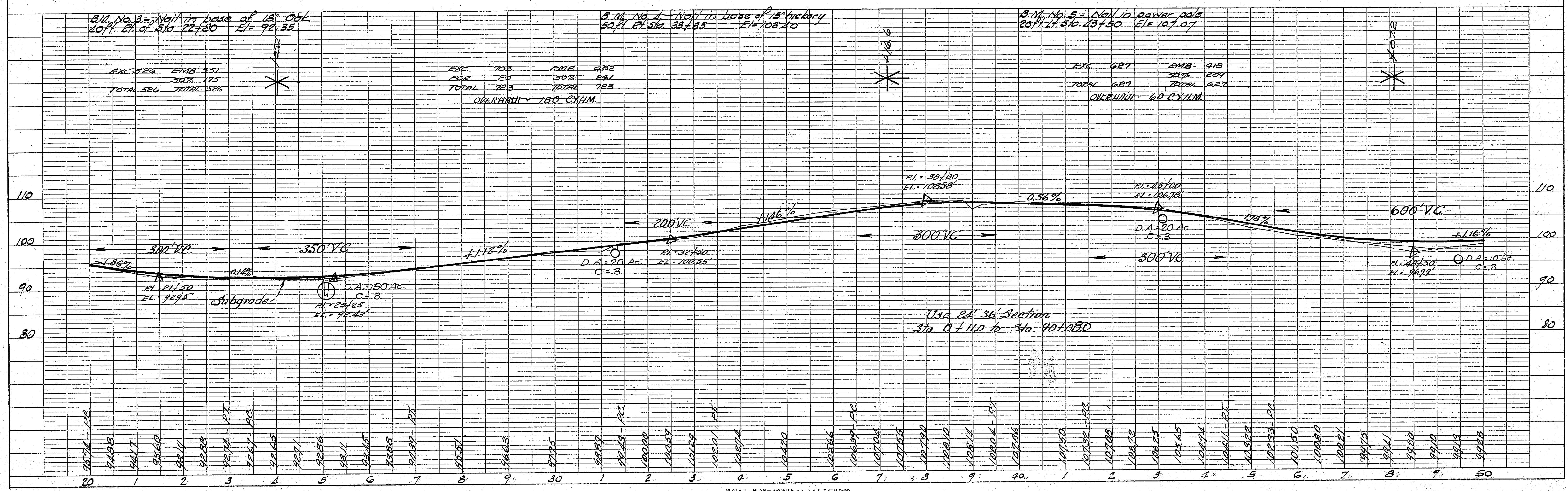
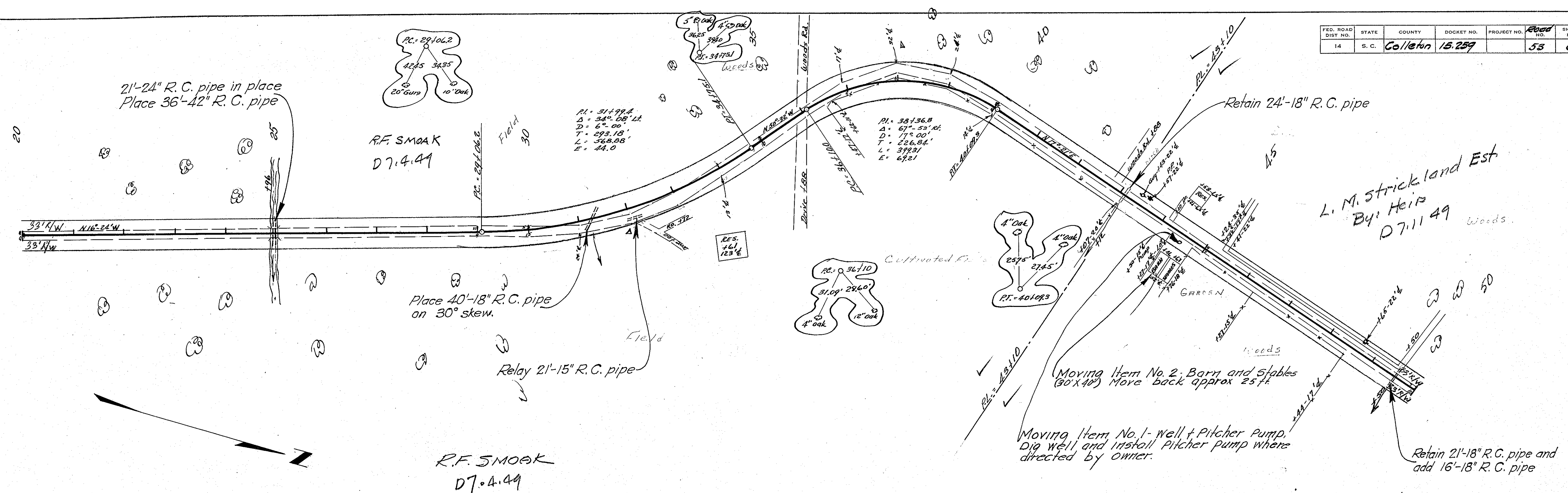
Excavation	2175 C.Y. for Ditches & Ramps not shown
Overhaul	32814 C.Y.H.M. for Base course material
Earth Type Base course (Earth Material)	600 C.Y. for intersections & drives 25% for compaction
Scarifying, Mixing, etc.	3000 M.S.Y. for intersections & drives
Bituminous Surfacing	3000 S.Y. for intersections & drives
15" R.C. Pipe	40 L.F. for Additional Sides Lines
18" R.C. Pipe	40 L.F. for Additional Sides Lines



FED. ROAD DIST. NO.	STATE	COUNTY	DOCKET NO.	PROJECT NO.	ROAD NO.	SHEET NO.	TOTAL SHEETS
14	S. C.	Colleton	15.259		53	6	52

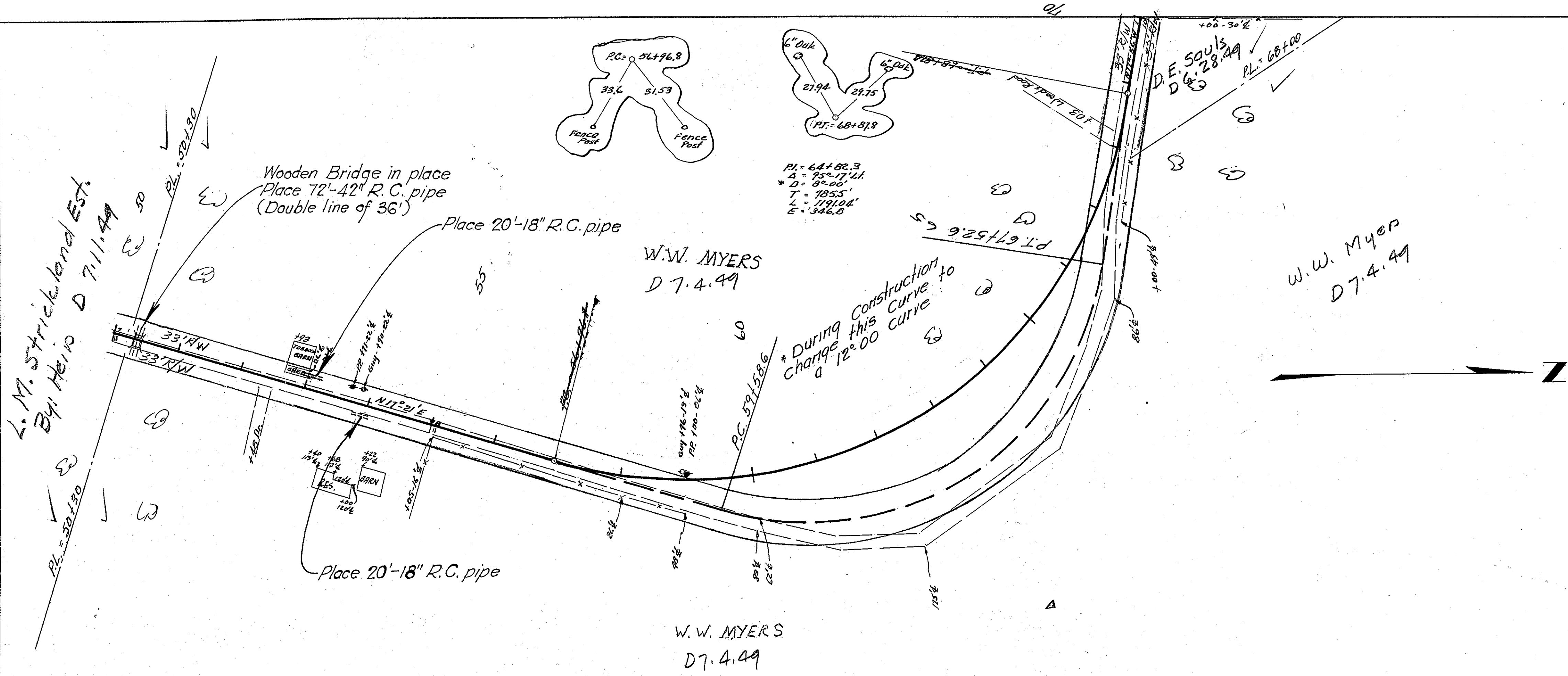
PLAN	DATE	BY	DATE
SURV. L.D.			
NOTE BOOK			
NO.			

PROFILE	DATE	BY	DATE
SURV. L.D.			
NOTE BOOK			
NO.			

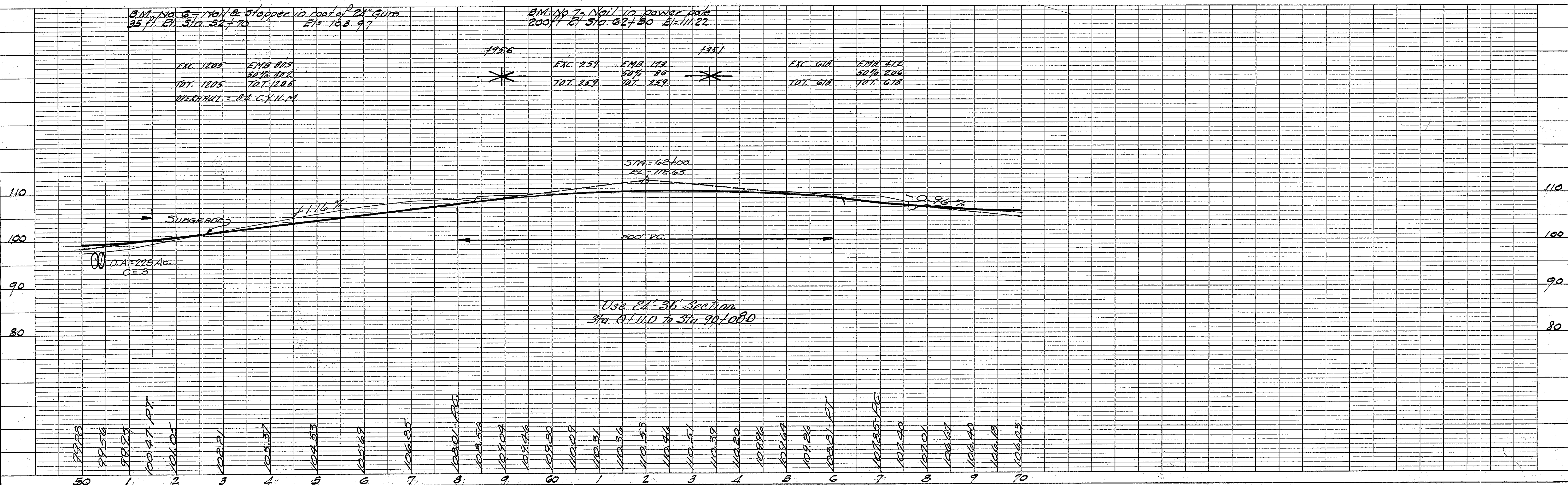


FED. ROAD DIST. NO.	STATE	COUNTY	DOCKET NO.	PROJECT NO.	SHEET NO.	TOTAL SHEETS
14	S. C.	Colleton	15.259		53	7

PLAN	DATE	BY
SURV. NO.		
NOTE BOOK		
ALIGNMENT CHECKED		
RT. OF WAY CHECKED		



PROFILE	DATE	BY
SURV. NO.		
NOTE BOOK		
GRADES CHECKED		
B.M. & M. NOTED		
STRUCTURE NOTATIONS CHECK		



PLAN	SURVEYED	BY	DATE
NOTE BOOK	PLOTTED		
NO.	ALIGNMENT CHECKED	G.D.P.	6/12/49
	RT. OF WAY CHECKED		

PROFILE	BY		DATE
SURVEYED			
PLOTTED			
NOTE BOOK			
GRADES CHECKED			
B. M. \pm NOTED			
NO.			
STRUCTURE NOTATIONS CHECK			

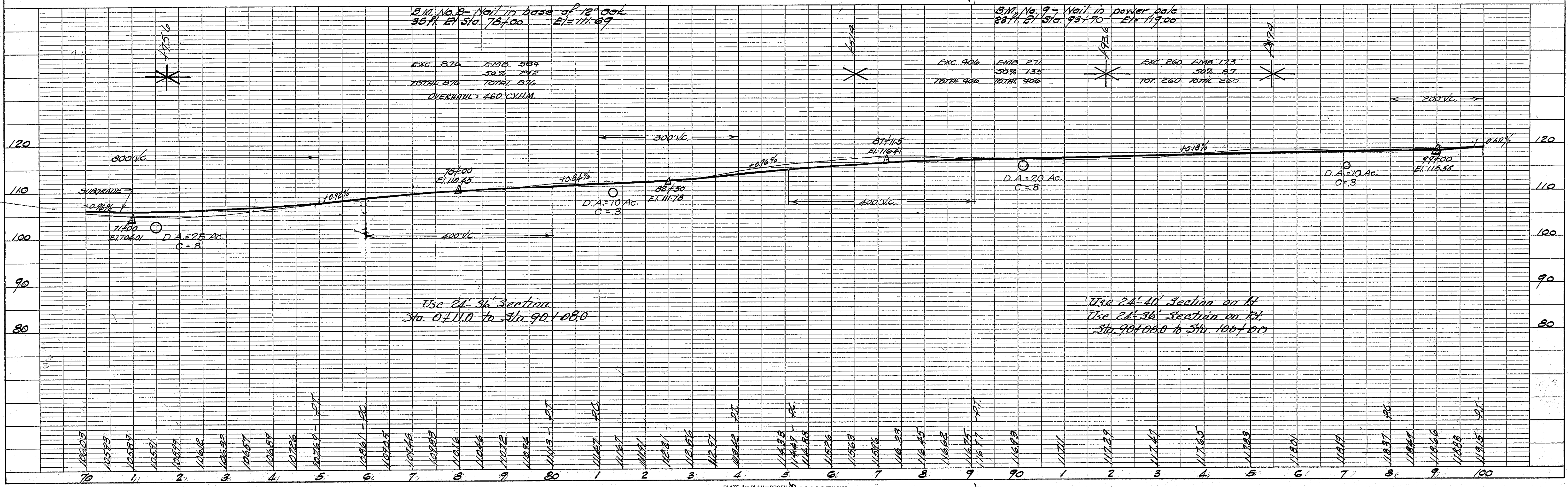
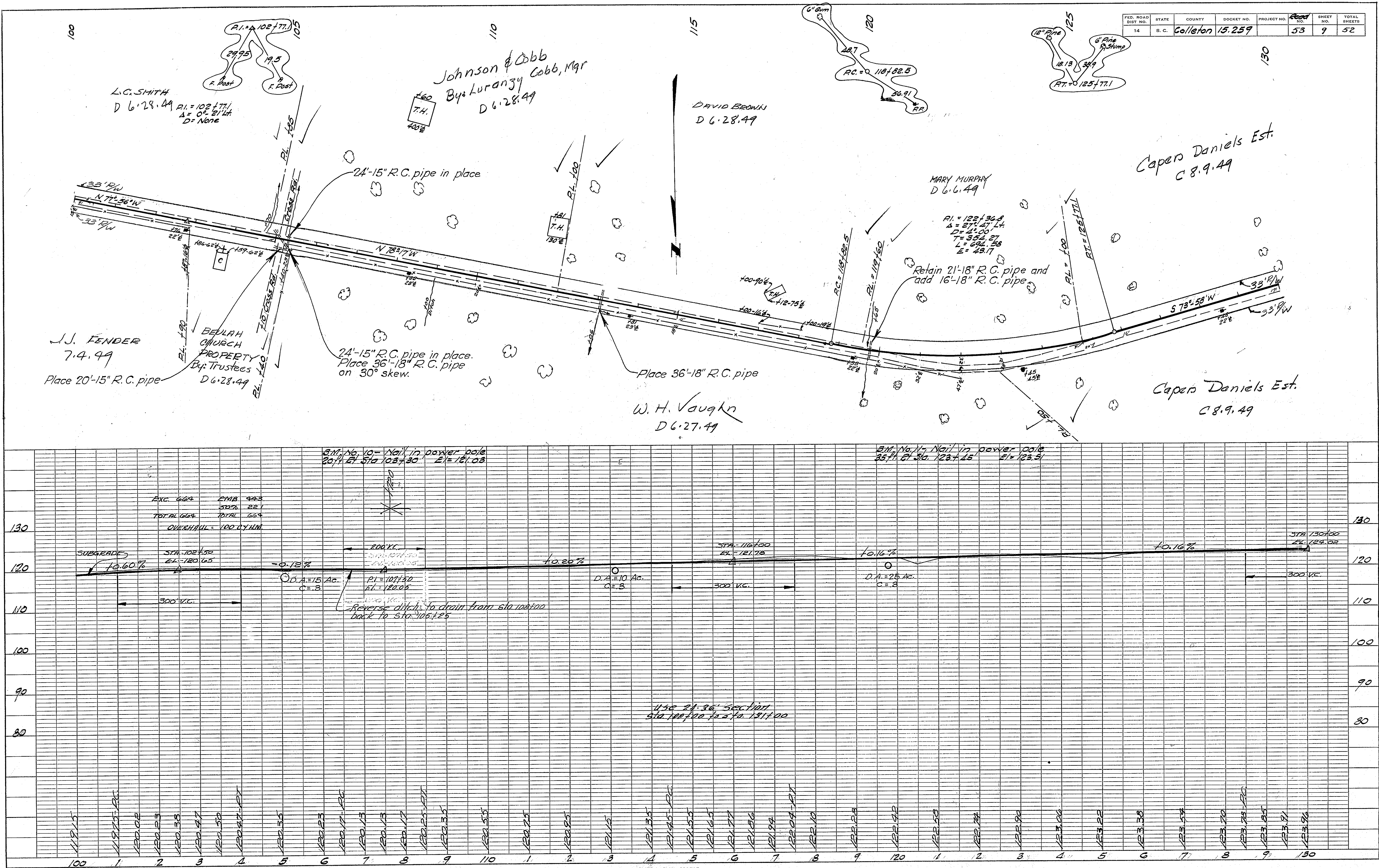


PLATE 1- PLAN-PROFILE U. S. P. R. & R. E. STANDARD
CHARLES BRUNING CO., INC., NEW YORK

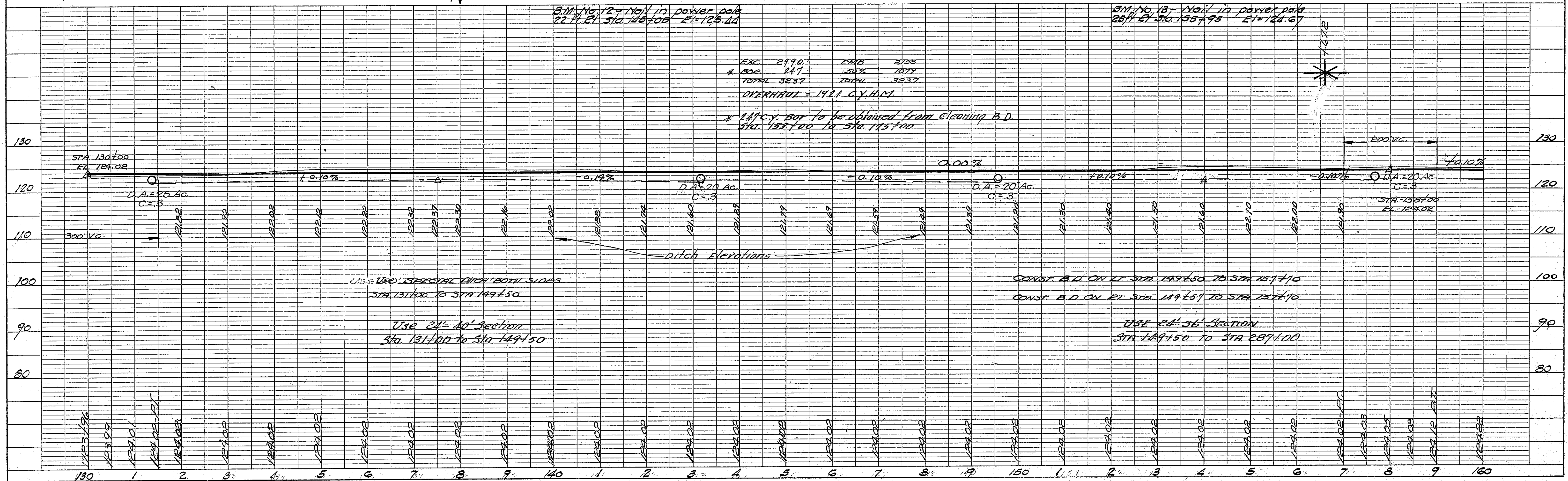
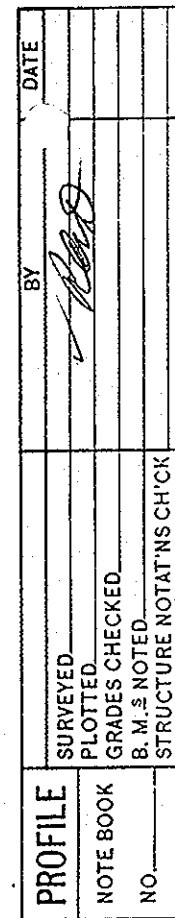
PLAN	DATE	BY	DATE	BY	DATE
SURV. & AD.					
NOTE BOOK					
ALIGNMENT CHECKED					
RT. OF WAY CHECKED					
NO.					

PROFILE	DATE	BY	DATE	BY	DATE
SURV. & AD.					
NOTE BOOK					
ALIGNMENT CHECKED					
STRUCTURE NOTATIONS CHECKED					
NO.					

FED. ROAD DIST. NO.	STATE	COUNTY	DOCKET NO.	PROJECT NO.	SHEET NO.	TOTAL SHEETS
14	S. C.	Colleton	15.259		53	9 52



PLAN	SURV. PLOTTER	BY	DATE
NOTE BOOK	ALIGNMENT CHECKED RT. OF WAY CHECKED	B.D.P.	6/24/95
NO.			



PLAN	DATE	BY
SURV. D.		
NOTE BOOK		
ALIGNMENT CHECKED		
RT. OF WAY CHECKED		

PROFILE	DATE	BY
SURV. D.		
NOTE BOOK		
GRADES CHECKED		
B.M.'S NOTED		
STRUCTURE NOTATIONS CHECK		

FED. ROAD DIST. NO.	STATE	COUNTY	DOCKET NO.	PROJECT NO.	ROUTE NO.	SHEET NO.	TOTAL SHEETS
14	S. C.	Colleton	15.259		538/78	12	52

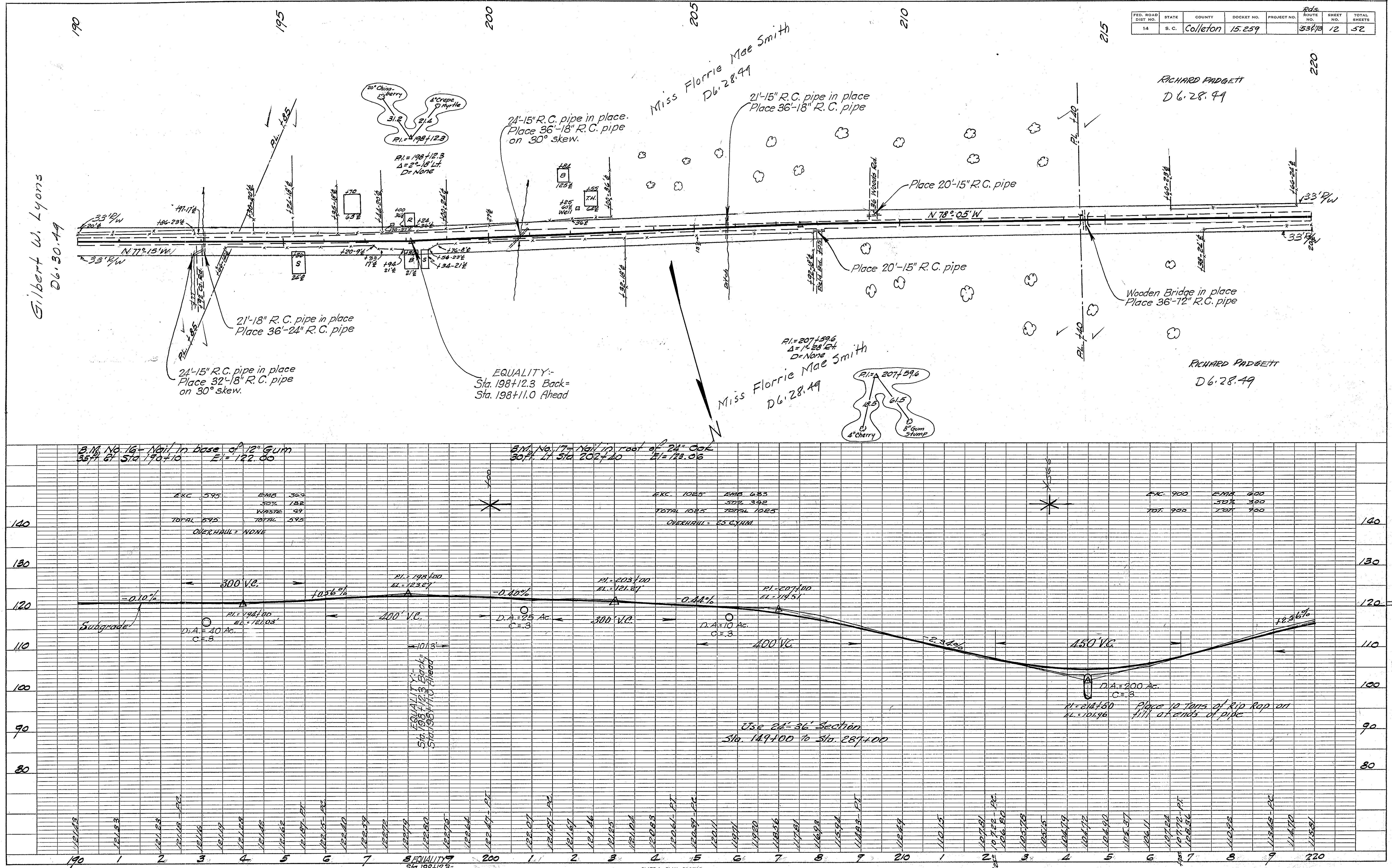
Gilbert W. Lyons
D6.30.49

RICHARD PADGETT
D6.28.49

RICHARD PADGETT
D6.28.49

Miss Florrie Mae Smith
D6.28.49

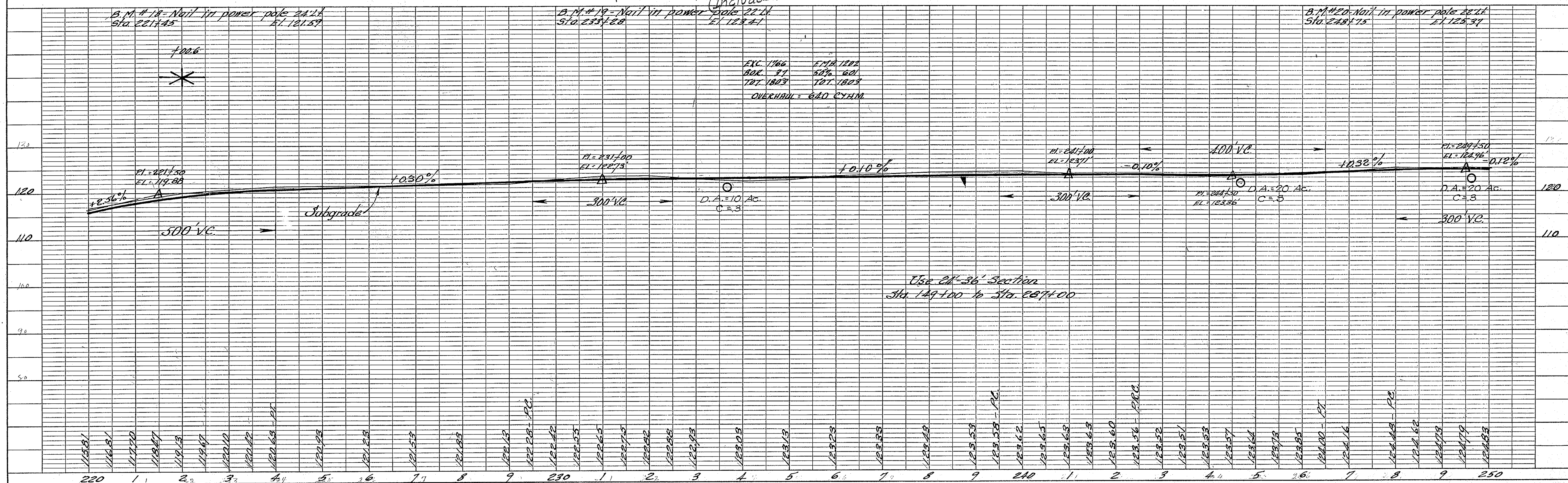
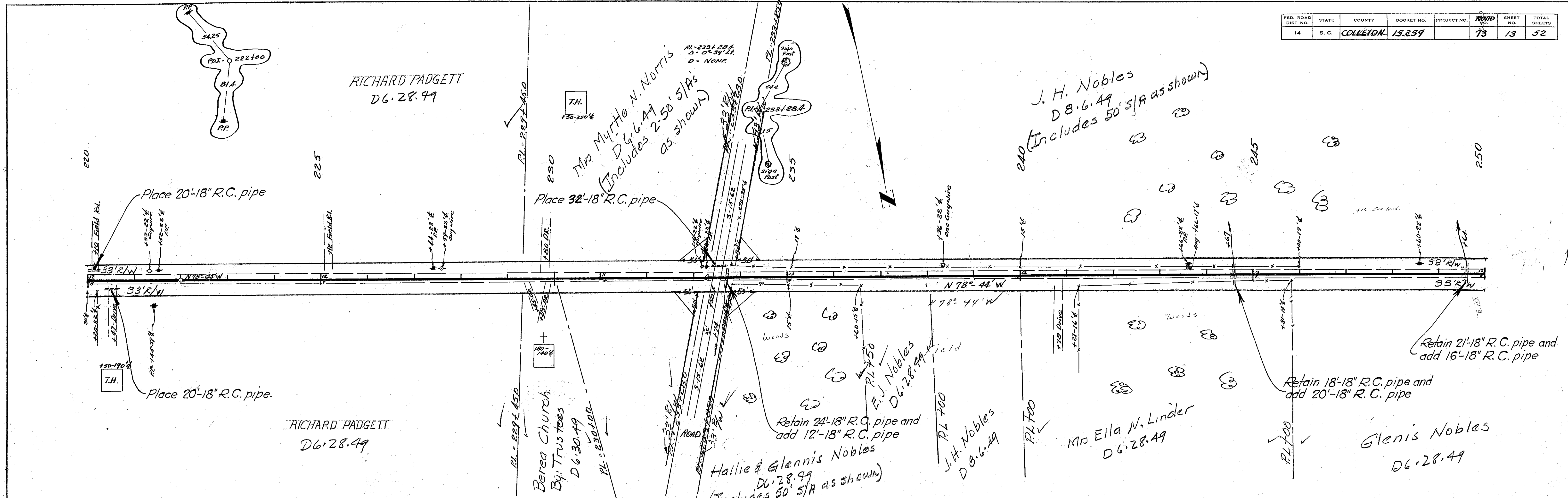
Miss Florrie Mae Smith
D6.28.49



FED. ROAD DIST. NO.	STATE	COUNTY	DOCKET NO.	PROJECT NO.	ROAD NO.	SHEET NO.	TOTAL SHEETS
14	S. C.	COLLETON	15.259		73	13	52

PLAN	DATE	BY
NOTE BOOK		
NO.		

PROFILE	DATE	BY
NOTE BOOK		
NO.		



PLAN	DATE
SURV.	BY
NOTE BOOK	NO.
ALIGNMENT CHECKED	DATE
RT. OF WAY CHECKED	DATE

PROFILE	DATE
SURV.	BY
NOTE BOOK	NO.
GRADES CHECKED	DATE
STRUCTURE NOTATIONS CHECK	DATE

FED. ROAD DIST. NO.	STATE	COUNTY	DOCKET NO.	PROJECT NO.	SHEET NO.	TOTAL SHEETS
14	S. C.	Colleton	15-252	15-252	14	52

